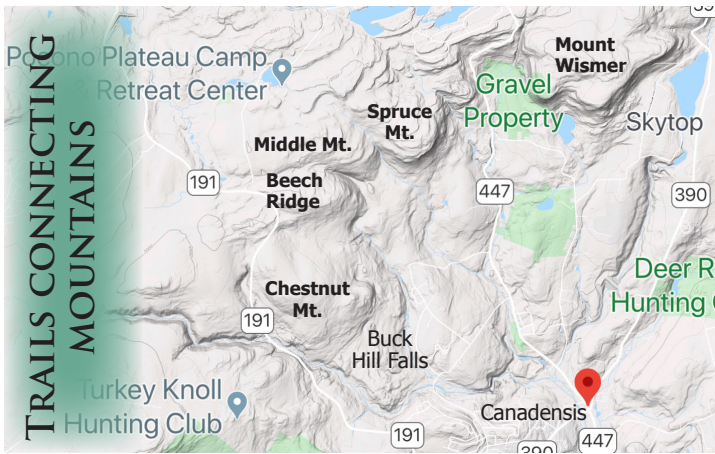


TRACES ON THE MOUNTAIN



The Spruce Mountain conservation parcel comprises sections of Chestnut Mountain, Beech Ridge, Middle Mountain, and Spruce Mountain. From Spruce Lake Retreat, hikers can cross Rt. 447 to Gravel Preserve and on to Mount Wismer, both open space owned by Barrett Township.

Thanks partially to a grant from Monroe County Open Space, the 398-acre Spruce Mountain Conservation Easement boasts a newly improved 3-mile trail that begins at the Chestnut Mt. trailhead, as well as a bridge over Griscom Run.

A 2019 Trail Easement and Maintenance Agreement among Spruce Lake Retreat, the Buck Hill Conservation Foundation (which holds the easement), and Buck Hill Falls Co. (owner of the land) enables hikers to trek the Buck Hill property and descend to Spruce Lake Retreat, where trail markers direct them back on to Buck Hill Falls property.



The trails are very rocky and steep.
Wear sturdy hiking shoes.
Take trekking poles.
Park at Chestnut Mt. trailhead.



Download the app Seek to make your hike a learning adventure. Point your camera, and Seek will identify the bird, plant, amphibian, insect, or fungus. Seek offers you observation challenges for your location. Part of iNaturalist, Seek is a joint initiative by the California Academy of Sciences and the National Geographic Society. One of the world's most popular nature apps, iNaturalist connects with a community of more than a million scientists and naturalists who can help you explore nature!



TRAIL MARKER FROM WWI ERA AT OVERLOOK



PORCUPINE CHEW MARKS ON SIGN

The mantra for all hikers is "Leave No Trace," but mountains themselves harbor many traces.

Humans, animals, and nature all leave tell-tale signs of their passage.

Human presence on these mountains has left historical marks that give us glimpses into the past.

VELMA PRICE'S PURCHASE

In 1932 Velma C. Price signed her name on the deed to purchase 341 acres of Spruce Mountain property at a tax sale for only \$36.34. It was a time when women rarely owned property, and her husband Bill was wise to see it as a good investment. In 1946 she sold it to Buck Hill Falls Company for \$15,200. Velma lived to be 106 years old.



THE ROAD NOT TRAVELED (ANymore)

Piles of stones tell stories. The row of stones just before the Nick mill site are echoes of what probably started as a mid-1800s log skid road for the Nick Mill. By World War I, the path had become a Barrett Township road that fell into disuse as the few tenants and their cabins disappeared.

SPRUCE LAKE RETREAT

The BHCF and Buck Hill Company thank the leadership of Spruce Lake for joining in a cross-easement agreement that enables hikers to descend Spruce Mountain. Founded by the Mennonites, the camp opened its doors in 1963. With its purchase of Spruce Mountain in 2017, the now 888-acre camp welcomes Christian and corporate groups to explore a deeper faith in God through Jesus Christ. Please respect the retreat's property.



NICK SAW MILL



Buck Hill harnessed the power of its creeks to power saw mills. Lumber from hardwoods and hemlock for tanneries were valuable resources. Visible from the trail, stone remnants of the Nick Mill still line the banks of

Dry Run, just over the boundary line of Buck Hill property. The Nick Mill dates back to the period of the Civil War. Elsewhere on Buck Hill property, Margaret's Falls was also the site of a water-powered saw mill. Logs from a mill on Buck Hill Creek, west of Rt. 191, moved by way of a gravity railroad to a lumberyard near Mountainhome Methodist Church, where it was sold or drawn by horses to Cresco Train Station.

WHY THE GRASS?



The grassland at the Spruce Mt. overlook is puzzling in the midst of the forested terrain. Why is it there? The answer is with sheep. As late as the 1950s, a farmer sent his grazing sheep from the site of what is now known as Middlebrook Farm on Rt. 447, up the steep slopes of Spruce Mountain. As many of 700 sheep once grazed there.

SKIING SPRUCE MT.?

In the early 1960s, Buck Hill ski enthusiasts eyed Spruce Mountain as the site for a ski area. With a vision to purchase the Stone property for the lodge and the Vogt farm property for a base, planners moved in machinery to rough out a trial ski slope, shown in green on the map.

The plan was to shuttle skiers from the Vogt farm base to the Stone property proposed lodge by way of Rt. 191. With the Camelback Ski Corporation, formed in 1962, spelling out plans for its resort, Buck Hill dropped its dream of the Spruce Mt. ski area.



Spruce Mountain Nature Trails



THE BUCK HILL CONSERVATION FOUNDATION

BUCK HILL FALLS, PA

Mission: "To preserve and protect land in and around Buck Hill Falls, to promote the health of the local forest and watershed, and to foster appreciation of the area's natural beauty."

Support the Buck Hill Conservation Foundation
www.buckhillconservation.org

May 2020

Spruce Mountain, Middle Mountain, Beech Ridge



TRAIL SIGN
Porcupine markings



PROPOSED SKI SLOPES, early 1960s

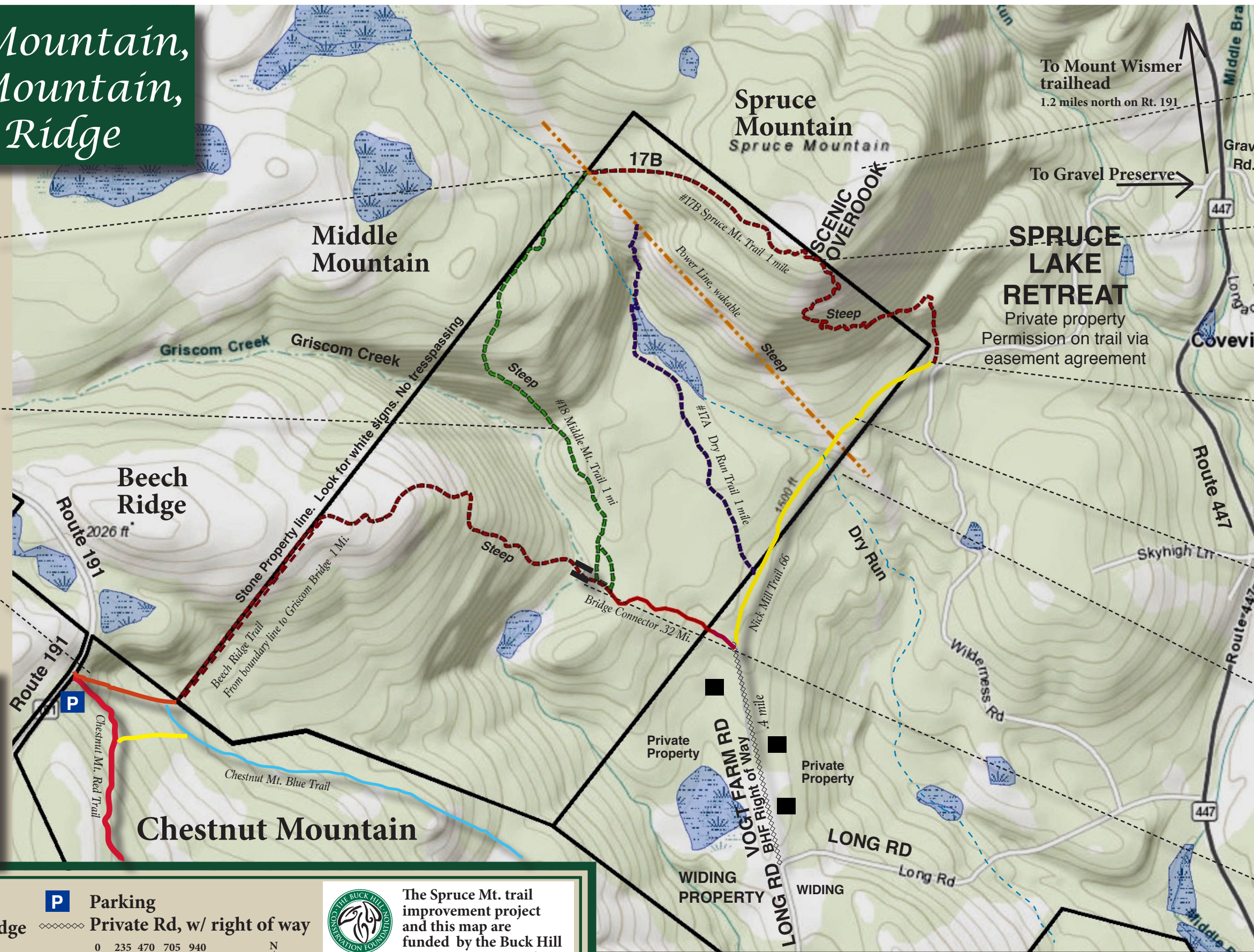


CHESTNUT MT TRAILHEAD, off Rt. 191

The Chestnut Mt. trailhead is on Rt. 191

4.3 miles from intersection of Routes 191 & 390 (@ Methodist church)

3.1 miles from Buck Hill Rd.



SHEEP MEADOW



ROCK CABIN OVERLOOK



SIGNS BACK TO BHF & MAPLE SUGAR TAPS



OLD TOWNSHIP RD. Stacked stones



NICK SAW MILL SITE





BRIDGE CROSSING GRISCOM RUN

Legend

- Griscom Bridge
 - Structure
 - Creek/Water
 - Boundary Line
 - Parking
 - Private Rd, w/ right of way
- 0 235 470 705 940 feet
- Elevation Gain: 350 feet
Cumulative Elevation Gain: 1,242 feet

The Spruce Mt. trail improvement project and this map are funded by the Buck Hill Conservation Foundation and a 2019 matching grant from Monroe County Open Space.

The trails on this map are located on Buck Hill Falls Company property and are open for the private enjoyment of the residents, their guests, and for the greater community by permission from the Buck Hill Falls Company office: 570-595-7511